

Body Surface Temperature Screening Cameras

Dual Sensor - Thermal Camera Optimized for Flu Detection



Key Specification

Compact Type of Body Temperature Screening Camera

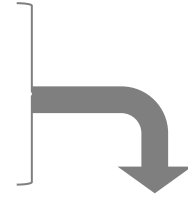


Visual Image Resolution | 1.2MP

Thermal Image & Detector | $-0\text{C}^{\circ} \sim 120\text{C}^{\circ}$

Thermal Image (80 x 60) Overlay with Visual Image
Up to 720 x 540

Event Association | Alarm-Out



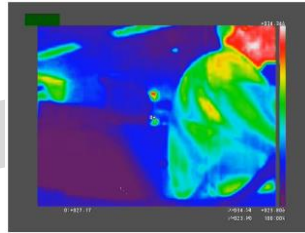
Visual/Thermal Overlay Mode

Visual Situation/Person Identification Along with Thermal Image Indicator

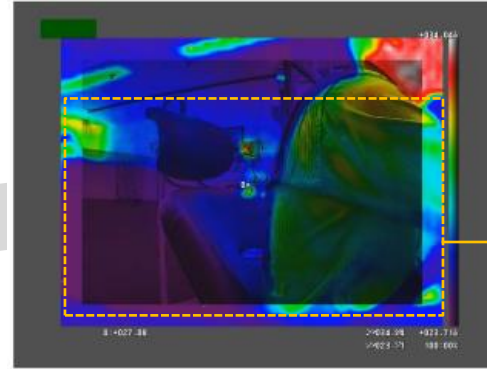
Visual Image | Steam#1
@ 1.2MP



Thermal Image (Color) | Stream#2
@ 80 x 60



Thermal Image (BW) | Stream#2
@ 80 x 60



Overlaid Image (Color)
| Stream#3
@ 720 x 540

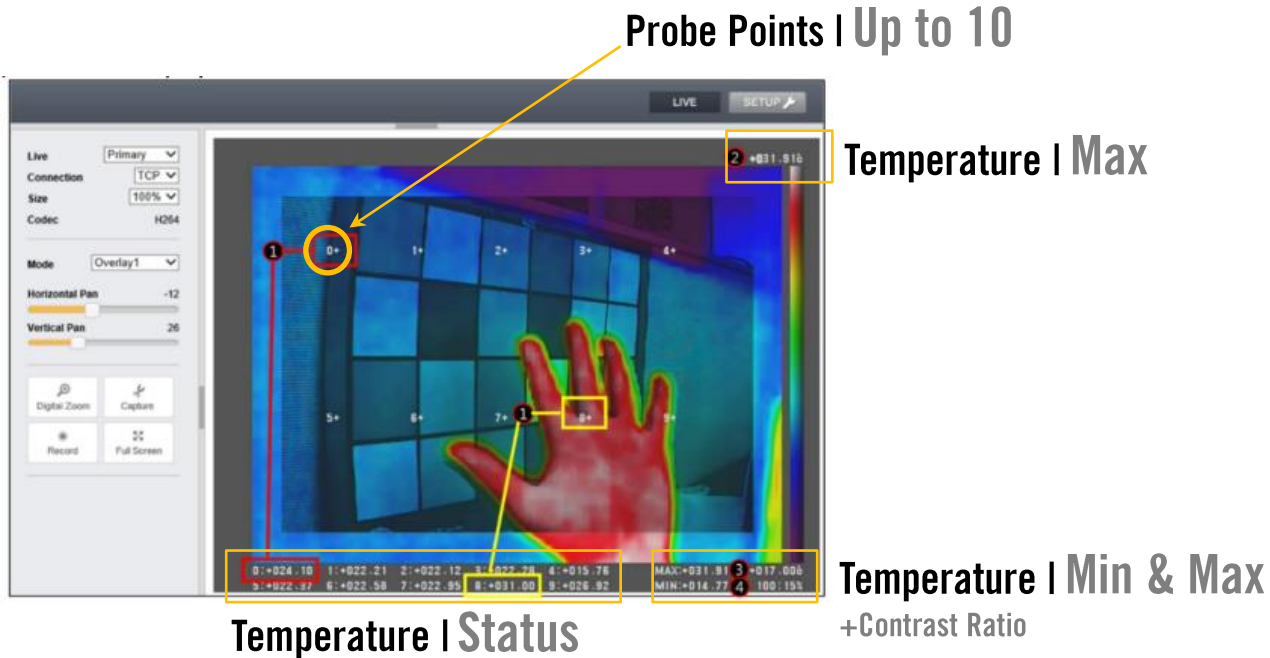
Overlaid Image (BW) | Stream#3
@ 720 x 540



Image Details
Overlaid Thermal Indication

Multiple Points of Temperature Measurement

Up to 10 Points of Simultaneous Temperature Probing



NOTE: Calibration is required for Emissivity of Human and Offset by Distance. In 1M ~ 4M distance, It shows 1.75C° GAP.

Alarm/Alert Activation

On the Condition of Preconfigured Temperature Threshold

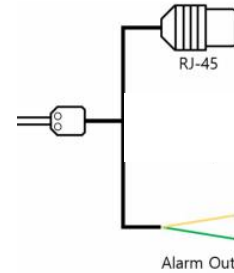
M Horizontal	0
M Vertical	40
Dynamic Range(Upper)	<input checked="" type="radio"/> ON <input type="radio"/> OFF Max 273 -100~370(C)
Dynamic Range(Lower)	<input checked="" type="radio"/> ON <input type="radio"/> OFF Min 370 -100~370(C)
Contrast	Max 100 Min 15
Mode_T	<input type="radio"/> Kelvin <input checked="" type="radio"/> Celsius <input type="radio"/> Fahrenheit
Colorbar	WhiteRainbow
Event Report	<input checked="" type="radio"/> ON <input type="radio"/> OFF
Event Max Temperature	40 -100~370 (C)
Relay Output	<input type="radio"/> ON <input checked="" type="radio"/> OFF
OSD	<input checked="" type="radio"/> ON <input type="radio"/> OFF
Flickerless Mode	<input checked="" type="radio"/> Auto <input type="radio"/> 50Hz <input type="radio"/> 60Hz

Apply Reset

Live Image



Setting | Temperature Threshold



Network Event
ONVIF

Yellow : Alarm -
Green : Alarm +
**Physical Contact
Alarm Out**

Specification

NOTE: Compatible with IDIS Solution Suite

		DC-TH2011 (Compact)	DC-TH2011W (Bullet)
Thermal Image	Frame Rate IR Sensor	< 9 Hz	
	Resolution IR Sensor	80 (h) × 60 (v) pixels	
	Spectral Range	LWIR , 8 to 14 μm	
	Field of View (FOV)	51° HFOV, 63.5° diagonal (f/1.1 silicon doublet)	
	Temperature Sensitivity(NETD)	<50 mK (0.05℃)	
	Object Temperature Range	0 ℃ ~ 120 ℃	
Visual Image	Image Sensor	1/3.2 inch Sony CMOS Progressive Scan	
	Effective Pixels	1280(H) X 960(V) : 1.23M Pixels	
	Frame Rate	30 fps	
	Resized Resolution	720 (h) × 540 (v) Pixel	
	Concurrent Connection	8 (RTSP Streaming)	
ETC	Alarm Out	1 port(Dry contact, Relay out)	
	Operation Temperature	0℃ ~ 50℃	
	Power Input	PoE(802.3.af), DC12V	
	Power Consumption	3.9W	
	IP Rating	n/a	IP 66
	Product Dimension (W x H x D)	80 x 113 x 33.1(mm) 80 x 113 x 41mm Foot(Mount Bracket)	142x128x322(mm)
	Weight	0.32kg	1.96kg